

# news

January 2015



The Staff Christmas Panto

## Happy New Year!

### In This Issue

Happy New Year	1
Children's Centre	1
Year 3 London Trip	2
Students Work	2
Pupil Premium Award	3
Attendance	4
Year 6 London Trip	5
Competition Winner	6
Christmas Fayre	6
Maths Challenge	7
Diary Dates	7

## Children's Centre Update

**The Children's Centre has now been handed over to the school and from February will become Polegate School Nursery.**

It does look a little bare in there at the moment as they have removed all their furniture and equipment. The Breakfast Club and After School Club will continue to run from this building until the end of this academic year.

From September we hope to have completed the building work on a new special extension just for them! Lorraine and Julie are working just as hard to make sure that the children have the full range of activities and just as much fun.

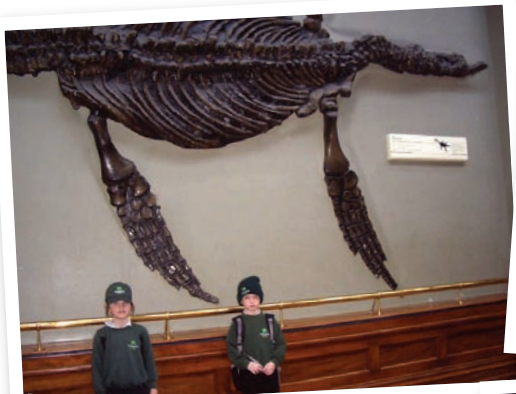
An exciting Chinese New Year celebration at the After School Club is also planned.

### Nursery places

The places for the nursery have been filling quickly with most mornings now full. Afternoon sessions are still available. Please enquire at the office if you are interested. We do also have an ever growing waiting list for the next few years!

# Year 3 at the Natural History Museum

**On Wednesday 17th December Year 3 Ventured to London to visit the Natural History museum. We left at :am... it was very early!**



**After a long journey we finally arrived and we went off exploring the museum**

We were amazed to discover the bones of many dinosaurs including Dippy the Diplodocus and Sophie the Stegosaurus. We couldn't believe how enormous a blue whale is and the height of a polar bear!

After lunch we spent some time with a team from the Museum becoming scientists, we worked with them to use magnifying glasses, microscopes and measuring

equipment to explore items from the natural world.

All too soon it was time to return to the coach ready for our Tour of London Landmarks. We saw Houses of Parliament, The River Thames, Trafalgar Square, Hyde Park and The London Eye. All of this was pointed out to us by a rather questionable guide – Mrs Barnard!

We had a fabulous day out and learnt lots whilst we were there. We are all ready for our next learning journey – London.

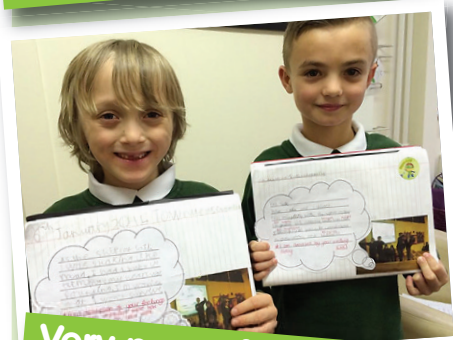
## Amazing work

2015 has started well with lots of visitors arriving at the office with work they are proud of!

I thought these examples of creative writing from year 6 were worth sharing with you. It is lovely for the children to know their work is being read by others.



**Year 6 - Great Writing**



**Very powerful writing from Year 4 pupils**

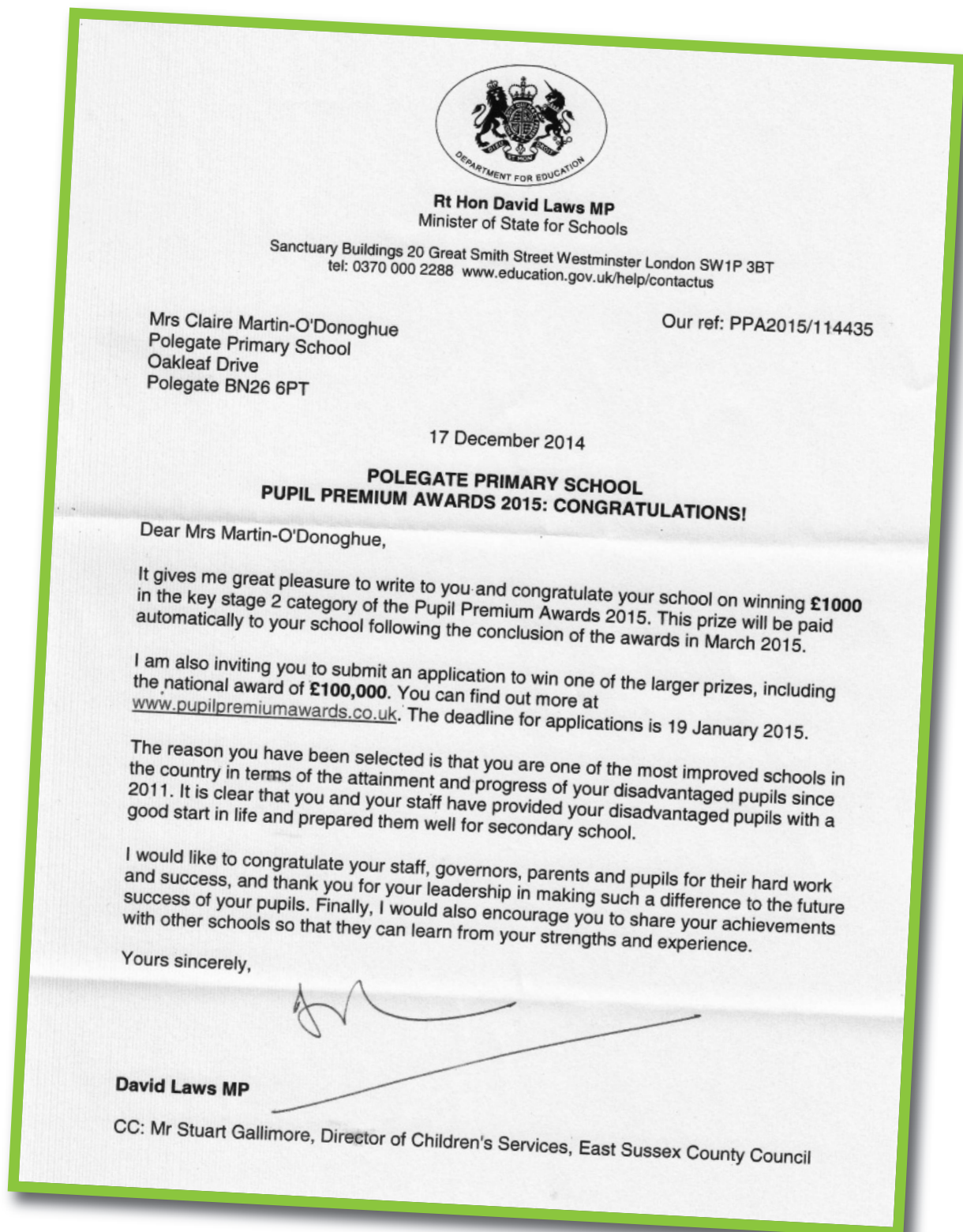


**Reception - Amber**



# PUPIL PREMIUM AWARDS

We were thrilled to receive this letter. It was completely unexpected. I hope you saw the article in the Eastbourne Herald last week about us. Well done everyone!



# ATTENDANCE UPDATE

**Don't let your child miss out by poor attendance and lateness. It is essential that your child attends school on time every day.**

**It didn't quite make the front page this time because our good news was much more positive!**

You all know how important attendance is. It is a regular feature of the newsletter and always one of the first things I mention to any parents considering sending their child to our school. I make it very clear that we have an expectation that children will be in school unless they are too unwell to attend. I explain we do hold parents to account on this and if this is not something they feel they can support then perhaps we are not the right school for their child. It might be a little blunt but I would rather set our expectations early. I have recently checked the attendance of every child in the school and was really disappointed to find there were 53 children with attendance under 90%. That means they have missed 8 days already! That is 12% of the school. I know we have had particularly nasty bugs this year (I got it too!) and this will impact on these figures however I thought that now would be a good time to focus once again on attendance.

## **Did you know:**

- There are only 40 teaching weeks in the school year; there are 12 weeks of holiday.
- Missing six days every term of every year is the same as missing one whole school year
- 95% attendance sounds good, but means that you are taking one day off a month

Most children have attendance that is between 95% and 100%. If a child has a lower attendance then we would expect doctors to be involved.

We know the earlier we address poor attendance patterns, the less likely it is that they will become a long term issue. We take a rigorous approach to poor attendance from the very start of school life. The Reception year sets the

foundation for the rest of your child's learning and is vital to their future success. We want them to establish good habits early.

## **Quite shocking statistics**

There is also clear evidence of a link between poor attendance at school and low levels of achievement. Of pupils who miss between 10% and 20% of school, only 35% achieve 5 or more GCSEs at grades A\* to C including English and maths. But 73% of pupils who attend 95% of school achieve this.

We see this for ourselves in school and it is incredibly frustrating for teachers. The children that have attendance lower than 95% do not make good progress and do not achieve the same results as their peers.

The government has taken action to improve school attendance. Last year, the government lowered the threshold at which children are defined as persistently absent to 15% or more of school time, so that schools could step in to tackle absence sooner - before the problem really takes hold. Previously, children who missed 20% of school were considered persistent absentees.

If your child has 85% or less attendance they are considered persistently absent and the local authority will intervene.

## **Being absent can seriously:**

- Stop their progress and create gaps in their learning plus every day absent from school is a day of lost learning
- Affects your child's friendships, it's harder for them to socialise and be part of a team
- It's embarrassing for your child to walk into an already settled classroom and have to catch up. We do not like this as adults. Imagine how children feel.
- Bad habits are hard to break - we can cope with minor illnesses like coughs and colds and if ever there was problem, we would contact you as soon as possible.

In accordance with section 444(1) of the Education Act it is the parents' responsibility to ensure their child receives both a regular and punctual education.

## **Fact:**

1. Children who attend Primary school regularly achieve more in the long term and are better able to make transition into jobs or further education. They learn at an early age about routine, boundaries and responsibility.

2. Lateness is disruptive to ALL children.

## **Some facts and figures**

- **90% attendance** - Your child is missing 4 weeks in a year. By the time they leave school they will have lost a full year of education!
- **80% attendance** - More than half a term a year is missed. By the time they leave school they will have missed 2 whole years!

I know I am aspirational but our current school target for this year is 97%, we came very close to this last year. Currently the whole school figure is 95.1%. We have quite a difference at the moment but I know you will work with us to improve on this.

Please remember we want the same thing - for your child to do well in school and achieve their full potential. One of the easiest and most simple things you can do as a parent to help them succeed is to send them to school every day on time.

I look forward to sharing much more positive attendance figures at the end of this term when the germs have all gone!

## **These are the current class figures**

RP = 94%	2R = 96%	5B = 97%
RH = 93%	3B = 96%	5C = 96%
1J = 95%	3P = 94%	6T = 95%
1A = 91%	4M = 96%	6M = 93%
2M = 96%	4B = 94%	



# Year 6 - Imperial War Museum Visit

**A wonderful time was had by all on the recent Year 6 trip to the Imperial War Museum in London last December.**

The children learnt a huge amount about the First and Second World Wars as well as getting to grips with several very interesting artifacts from those time periods.

As always, the children were impeccably behaved and represented the school well in everything they did.



## Christmas Trips

**The final few weeks were very busy with some very exciting trips! Both year 3 and year 6 visited London.**

We know we have very special children at Polegate School. They show responsibility, maturity, rise to any challenge, they are kind and tolerant towards others and when we take them out on trips or see them alongside other schools this really stands out and reminds us.

We are always incredibly proud of them but it was lovely to receive a text from a teacher while they were out that said 'the children are being brilliant and we really do have a special school.' I agree!

## Dog Complaint

**We received this e-mail. I know it is something I have mentioned before but it obviously remains a concern.**

'Hello I hate to complain and normally keep myself to myself but yesterday there was 6 dogs outside the junior gate.

I am a dog lover myself and have two dogs a Staffordshire and bulldog but still don't think it's right for them outside the school. A few times I've had to dodge poo it's not right!'

## Visits from other schools

**Over last term and this term we have been visited by many local schools.**

They have been recommended to visit Polegate to see good practice in a variety of areas from reading to general expectations to behaviour management.

We are of course delighted to share what we do with others and children and staff should feel very proud.

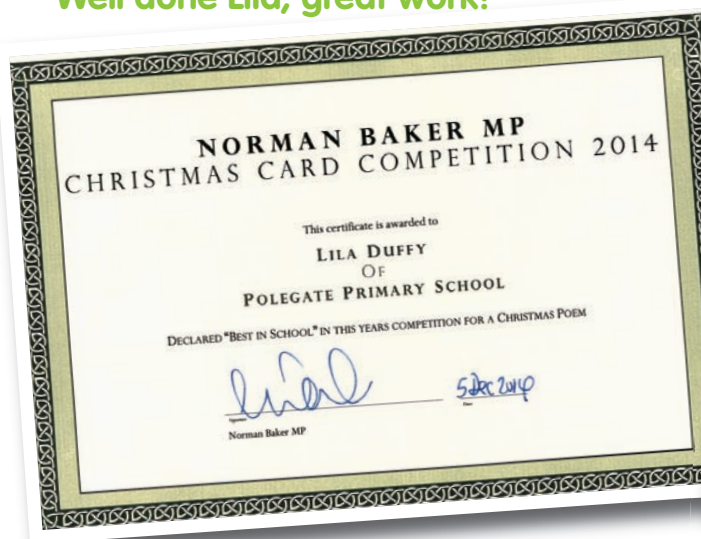


# CONGRATULATIONS LILA!

Lila Duffy has been selected as 'Best in School' for the annual Christmas Card Design run by local MP Norman Baker.

Lila now has the opportunity to participate in a tour of the Houses of Parliament.

**Well done Lila, great work!**



## Fun at the Christmas Fayre

**I missed my first Christmas fayre in 18 years!**

I was so disappointed that I was unwell and missed out on all the fun!

All I can say is it looked fantastic on Twitter and I know how hard the PFA worked. New walkie talkies for our midday staff have just arrived and these were funded by the PFA. They can hear each other now and are very grateful!



**Great work Mrs Bailey**



# Maths Challenge

The coloured shapes stand for eleven of the numbers from 0 to 12. Each shape is a different number. Can you work out what they are from the multiplications below?

$$\square \times \square \times \square = \text{yellow semi-circle}$$

$$\square \times \text{orange oval} = \text{yellow semi-circle}$$

$$\text{blue rectangle} \times \text{orange oval} = \text{red circle}$$

$$\text{blue rectangle} \times \square = \text{green triangle}$$

$$\text{green triangle} \times \square = \text{red circle}$$

$$\square \times \square = \text{orange oval}$$

$$\text{blue rectangle} \times \text{blue rectangle} = \text{purple star}$$

$$\square \times \text{purple star} = \text{blue hexagon}$$

$$\text{blue rectangle} \times \text{yellow diamond} = \text{blue rectangle}$$

$$\text{yellow diamond} \times \text{blue hexagon} = \text{blue hexagon}$$

$$\square \times \text{red inverted triangle} = \text{red inverted triangle}$$

$$\text{red inverted triangle} \times \text{yellow semi-circle} = \text{red inverted triangle}$$

## YOUR ANSWERS

$$\square = \text{purple star} =$$

$$\text{blue rectangle} = \text{yellow diamond} =$$

$$\text{orange oval} = \text{blue hexagon} =$$

$$\text{red circle} = \text{purple star} =$$

$$\text{yellow semi-circle} = \text{green triangle} =$$

$$\text{red inverted triangle} =$$

We only had one entry after the last challenge. It is worth a go! Bring your completed challenge in and give to Mrs Jones. The winner can choose from a range of maths prizes- games, books, calculators etc.

## Diary Dates

The next  
**INSET Day is**  
**Friday 27th**  
**March 2015**

## Archive



You can read all the previous newsletters on our website.

## twitter

Be the first to  
hear the news.  
Follow us on twitter.  
We now have **400**  
followers!



Polegate School  
Oakleaf Drive  
Polegate  
East Sussex BN26 6PT  
Tel: 01323 482404  
Email: [info@polegateschool.co.uk](mailto:info@polegateschool.co.uk)



## Feedback

We'd love to hear your feedback and any new ideas you have. Please send us your thoughts via the contact us page on the school website:

[www.polegateschool.co.uk](http://www.polegateschool.co.uk)

Designed by Prowork: [www.prowork.co.uk](http://www.prowork.co.uk)