

news

January 2018



In This Issue

A Terrific Start to Term	2
Skip2BFit	3
Ways to Stay Safe	3
Christmas Panto	4
Stunning Start	4
Attendance	5
Great Work	7
Diary Dates	7
Parking	8
Walking Bus	9
Extension Plans	10
Parent Support Drop In	12

HAPPY NEW YEAR

Happy New Year everyone and welcome back!

The Christmas holiday seems a very distant memory now! I would like to thank you for all the kind words, gifts and cards. I'm sure it wasn't restful but I really hope you all had a marvellous holiday.

The children have certainly come back full of enthusiasm and ready for school.

Whilst we have only been back for a week so much has happened already and it has been so busy.

A TERRIFIC START TO TERM

The term got off to a terrific start and everyone endeavoured to make it as exciting as possible. There was such a buzz around the school on day 1.

We aim to start each topic with an inspirational hook for the children and I have included a taste of some of the experiences in this newsletter! I hope your child came home and shared some of the magic with you.

As always the teachers and teaching assistants have worked hard to make the environments are inviting and inspirational for the children. Every term we push ourselves to see just how creative and imaginative we can all be. Each time I see the new displays they always seem to be the best yet and it is hard to see how they can be improved further and with every change of topic the teams raise the bar and they get better! It only goes to show the talent and dedication we are so lucky to have at Polegate. Visitors to the school will always comment on the stunning displays. The hard work is so worth it when we see the children's reactions and engagement; they really do have a positive impact on learning.

Photos display You are very welcome to come in and take a look for yourselves!



The Great Fire of London



Willy Wonka!



SKIP2BFIT

We have already enjoyed a Skip2bfit workshop which the children and staff all loved.

A great start to a healthy 2018 and we all joined in. The coach's feedback was so positive. He commented on how well behaved and engaged the children were throughout the day. Chelsea Nicholls and Miss Baker were the champions on the day!



WAYS TO STAY SAFE

We have had a visit from the NSPCC sharing with the children ways to stay safe. Pupils in year 5 and 6 also received workshops appropriate to their age.

The Childline number was shared with the school, I have been threatened by Cavan already that he will call it when I next demand he practises his maths passport!

Childline is here to help anyone under 19 in the UK with any issue they're going through. Whether it's something big or small (not as small as maths passport though!), their trained counsellors are here to support them.

Childline is free, confidential and available any time, day or night:

- by calling **0800 1111**
- by email
- through 1-2-1 counsellor chat

5 facts about Childline:

- they were started in 1986 by Esther Rantzen

- they help any young person in the UK
- they can help with anything – from abuse and bullying to exam stress and relationships
- calling Childline is free and doesn't show up on the phone bill
- in 2006 we joined the NSPCC to help even more young people.



CHRISTMAS PANTO!

This is one of the highlights of the year for the children. What's not to like about seeing all your teachers and TAs dressed up in silly costumes, being silly while performing a 'highly professional' production of your favourite fairy tale?!

Past pupils often ask me if they can come back and talk really fondly about the pantomimes. I have to say they are hilarious, possibly unintentionally so at times! We have great fun doing these and we couldn't have asked for a better audience.



ALL ABOARD FOR POLEGATE'S STUNNING STARTS!

The range of experiences for the children on day 1 was quite staggering. Year 2 came in dressed as Tudors and experienced how different life would have been.

Their costumes looked absolutely stunning and all added to the experience- the day brought the history topic to life and made it very memorable! They certainly did not agree with Tudor views that women and girls should do all the chores and not learn!

Year 6 have embarked on an exciting journey as noble knights and spellbinding sorcerers! Their first day included meeting various characters from myths and legends. My eyes were a big topic of conversation that day! Even the staff couldn't look at me and I did frighten a few of them who were not expecting my new look!

The quality of writing year 6 produced on that day was quite incredible and once again this new topic has captured their imagination. We have had many visitors with their wonderful home learning projects to the office.

Our school nursery got involved in our stunning starts and the children all experienced the traditions of New Years' Eve and celebrated the festivities on their first day: singing Auld Lang Syne, watching the fireworks and listening to Big Ben. I really hope your children came home and shared their experience with you.

We have another busy but short term ahead of us.



ATTENDANCE

Good attendance means being in school 98% of the time.

That is no more than 4 days off in a school year. This is achievable for most children and I'm pleased to say that most children at Polegate School achieve this which is great. I am also so grateful for your support. Our school attendance is the highest it has ever been! Over the last 4 years it has increased each year - thank you!

School Attendance

The overall school attendance is currently at 96.4%.

RV = 95%	3M = 97%
RH = 96%	3Mc = 97%
RHi = 97%	4M = 96%
1N = 96%	4D = 97%
1B = 97%	5GK = 97%
1Y = 95%	5W = 96%
2B = 96%	6M = 97%
2A = 97%	6R = 97%

Attendance during one school Year	Equates to days absent	Which equates to approx	Which means the number of lessons missed
94%	10 Days	2 weeks	50 lessons
90%	19 Days	4 weeks	100 lessons
85%	29 Days	6 weeks	150 lessons
80%	38 Days	8 weeks	200 lessons
75%	48 Days	10 weeks	250 lessons
70%	57 Days	11.5 weeks	290 lessons
65%	67 Days	13.5 weeks	340 lessons

90% = 1 Day missed every fortnight

80% = 1 Day missed every week

LOW ATTENDANCE = SLOW PROGRESS

Help your child achieve fantastic progress by aiming for 100%

YOUR FEEDBACK ON ATTENDANCE

I hope that you all took the opportunity to complete the short questionnaire on our school's attendance initiatives. I decided to consult you all as I am always more than happy to review the rewards and incentives we offer. Thank you to everyone that contributed to this.

A total of 186 responses were received and analysed.

These were just some of the range of viewpoints you all held:

'Its always difficult to get children to understand the concept of learning now for a better life later but this helps.'

'I do think the end of year prize draw should be for those children that achieve 100% attendance for the whole year.'

'If a child has a long term sickness this should be taken into consideration but there are so many parents that are making repeat holidays during school term with no repercussions. There is a child in 2B who has been to Disneyland three times since September during

school time and they don't care as nothing is done. My child repeatedly comes home telling me so and reports a child is sick but then on parents facebook they are on holiday!'

'I struggle with the whole concept of rewards for attendance. My child was recently sick and was distraught at being off school even though she needed to be, as she would no longer have 100% attendance.'

'Brilliant incentive, my child came home yesterday talking about the fact that he could possibly win a bike. Great idea.'

'I fully support the all the attendance incentives and think they are a great idea.'

'I think it's great you are recognising those children that would have had 100% if it wasn't for a hospital appointment. This is great!'

'This encourages my children to want to go to school'

'I feel extremely strongly that we should not be praising 100% attendance in any capacity! If you are to give rewards it should be the parents that receive them! My daughter attends because I am the one that gets her up in the morning, I am the one that gets her clothes ready, I am the one that buys the uniform, I am the one that arranges child care, Afterschool club or breakfast club, I am the one that takes her and collects her!'

'Amy really enjoys receiving the term rewards and the pen for example she received is used constantly, so thank you.'

'I feel much happier now I have read this! to be fair I have always been happy with the prizes & appreciate the time the School takes to organise these. thank you.'

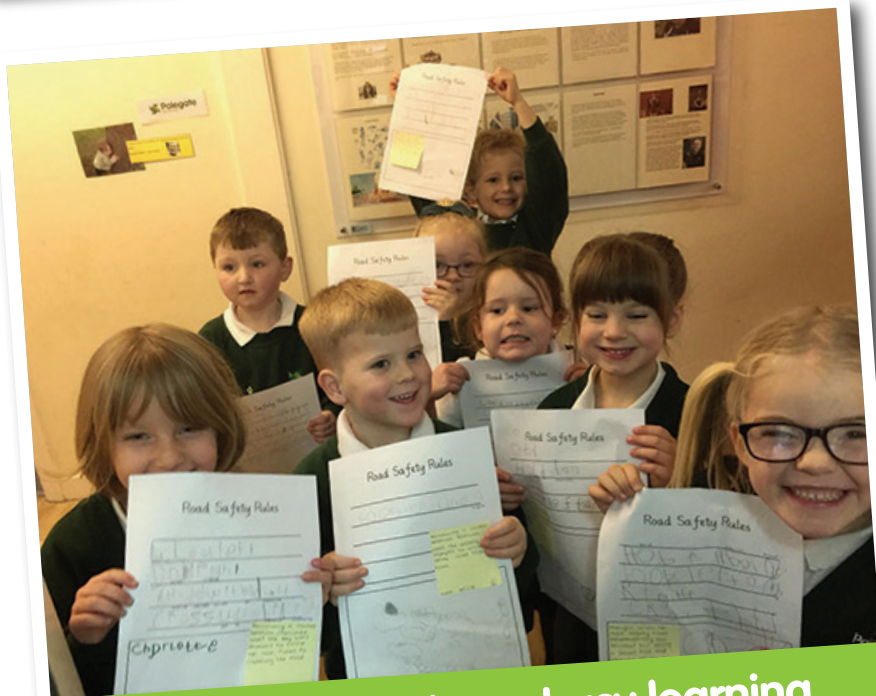
'I think Polegate school are very adept at recognising all children's achievements; academic and person. The above are excellent incentives.'

Overall your responses were very positive regarding all the rewards. As you can see from the comments you don't all agree! It is a subject that generates strong feelings in parents. Interestingly the 12% on average that didn't agree were not the same for all questions. There will always be opposing viewpoints and we will never please everyone but based on this survey we will be keeping the rewards and initiatives the same for this coming year as the majority of parents feel positive about them.

The individual rewards will go out within the next few weeks. This will give you time to pop in to the office and let Kerry know if your child has had a hospital appointment so that we can include them as 100% and also to prepare your child if you think they will be disappointed. They have 6 opportunities across the year and there is always next term! Class teachers will give these out discretely to minimise any disappointment that some children may feel.

Your views	liked this initiative	Did not like this initiative
Individual termly rewards	84%	16%
Class rewards	88%	12%
Individual reward end of the year	87%	13%
Prize draw at the end of the year	87%	13%

GREAT WORK!



Reception have been busy learning about road safety with visits out to experience it first hand!

DIARY DATES

Thursday
8th February 3.30pm
Wonderful work

Monday
19th February
INSET DAY

Monday
5th March
4.00 – 7.00pm
Parent Consultations

Wednesday
7th March
3.30 – 5.30pm
Parent Consultation

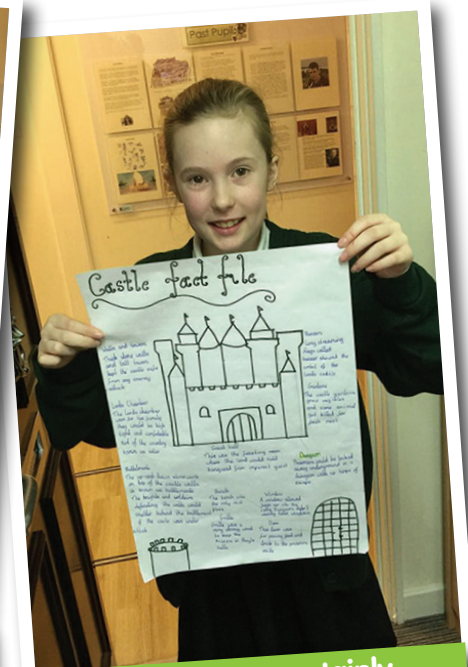
Thursday
29th March
INSET DAY



I can't think why Addison would be so proud of this model! The T is for Tinworth not the Taj Mahal!



Sam has had an incredible first week back! Just look at this stunning work!



This topic has certainly captured Year 6- 5 pieces of home learning completed over the weekend!

PARKING

Sadly, this remains an ongoing issue for us and will only get worse as the school expands unless we do something about this now.

Parents are really frustrated and feel quite angry about the risks some drivers are posing to our children. I had a conversation within the first few days with a parent who had just witnessed some dangerous parking on the corner. I am sharing their comments with you in the hope that everyone will take this issue seriously before a child is injured or worse!

"Thank you for taking the time this morning to talk about the parking outside the school.

I am appalled at how many parents are parking on the double yellows, zig zags, pavement and on corners. This is not only dangerous its also illegal. Will it take a child to be knocked down before someone does something about it!.

There is no way an emergency vehicle could gain access quickly in the morning or afternoon because of the lazy parking.

I have enclosed a photo I took on the way out but it was far worse than this earlier on. I will send you more photos. I think name and shame is the way to go."



BABY NEWS

Mrs Burke has had her baby and Lucas has a new baby brother!

Roman Joules Burke was welcomed into the world by c-section on Wednesday 3rd Jan at 00:33am. At a whooping 9lb 6oz!!!!

We are all thrilled at the Burke family's news.



ABSENCES

If your child is off sick and would be attending a club on this day it would really help us if you could mention this when you report the absence.

We keep registers for clubs and expect staff to call home if a child is not there when expected for safeguarding reasons. They would call you at home to check your child is with you. If we know about the club at the time you call in the morning we can mark them absent on the club register and avoid the need to call home.

The same applies if your child is absent and you use either the Breakfast or After School club please could you also make sure you ring to let the club organisers know. You can leave a message on their mobiles or ring the office.

BINGO!

PFA Bingo Night
Friday 19th January
A really fun night, a great chance to meet other parents and raise funds for the school.

WALKING BUS

I think we all recognise the need to take really proactive steps to minimise traffic around the school especially as we are increasing in size.

It is an issue for our neighbours, it poses safety issues for children and families crossing roads and we have a responsibility to do this for the environment in order to minimise pollution. We should be trying to reduce the number of cars and increase the opportunity for pupils to walk, cycle and scoot to school; this also reduces obesity and improves the fitness of our children.

An idea that I would like to explore again is the 'walking bus'.

What is a walking school bus?

A walking bus is a fun, healthy, safe and sustainable way of travelling to school. Powered by good, old-fashioned legwork, the children and volunteers walk in a group along a set route, picking up or dropping off 'passengers' at specific 'bus stops' on their journey to and from school. It can be as informal as two families taking turns walking their children to school to or as structured as a route with meeting points, a timetable and a regularly rotated schedule of trained volunteers.

A meeting point that I think we could start with is the large car park behind the Co-Op. Parents could drop off at this point and the children would walk up the High Street with volunteers.

Everyone on the walking bus is expected to wear high-visibility tabards. Adults involved would be police-checked and all routes approved following a risk assessment.

School communities are finding that they can benefit from the positive



effects that the walking bus has in enhancing road safety awareness skills among children, as well as health and environmental benefits.

How can we make this work?

I am quite happy to start this as a small project and then develop it further, adding different routes to

expand the number of families that can join.

We would need volunteers. Are you interested?

Before starting this I would like your views and feedback. Please complete the form to give me an idea if we can get this started.

FEEDBACK FORM

I would like my child to use the walking bus.

Yes ☐ No ☐

The car park in the High Street is a good meeting point

Yes ☐ No ☐

Any other suggestions for a route:

I would be interested in volunteering

Yes ☐ No ☐

Name:

Child's name

Class

Days I could volunteer

Mon ☐ Tue ☐ Wed ☐ Thur ☐ Fri ☐

Any other information

PROPOSED EXTENSION

Following the public consultation which many of you attended just before Christmas we had another meeting to discuss the plans before submission to county next week.

I am really pleased the architects listened to your feedback and have acted on it. Mr Stone's suggestion of adding parking to the front of the school was taken on board creating car parking needed with no loss to playgrounds. Some of the playpark has been needed to meet planning requirements for parking but they have managed to leave half the park which the town council will install with much needed exciting new playground equipment! I think you will agree this is a really good compromise.

Work is planned to start in August this year! It seems we are a constant building site but I am sure it will be worth it in the long run!

PROPOSALS: SECONDARY ELEVATIONS

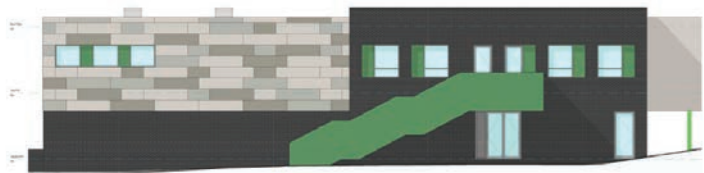


North East Elevation



North West Elevation

PROPOSALS: PRINCIPLE ELEVATIONS

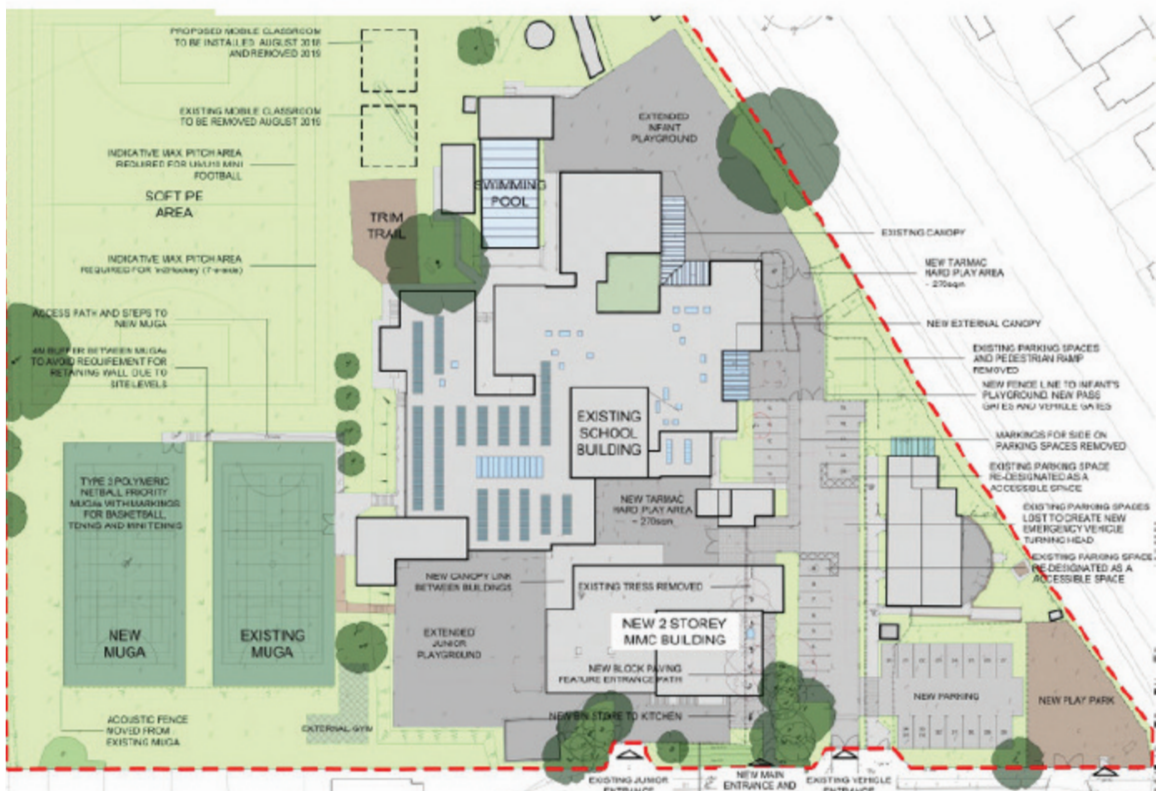


North East Elevation

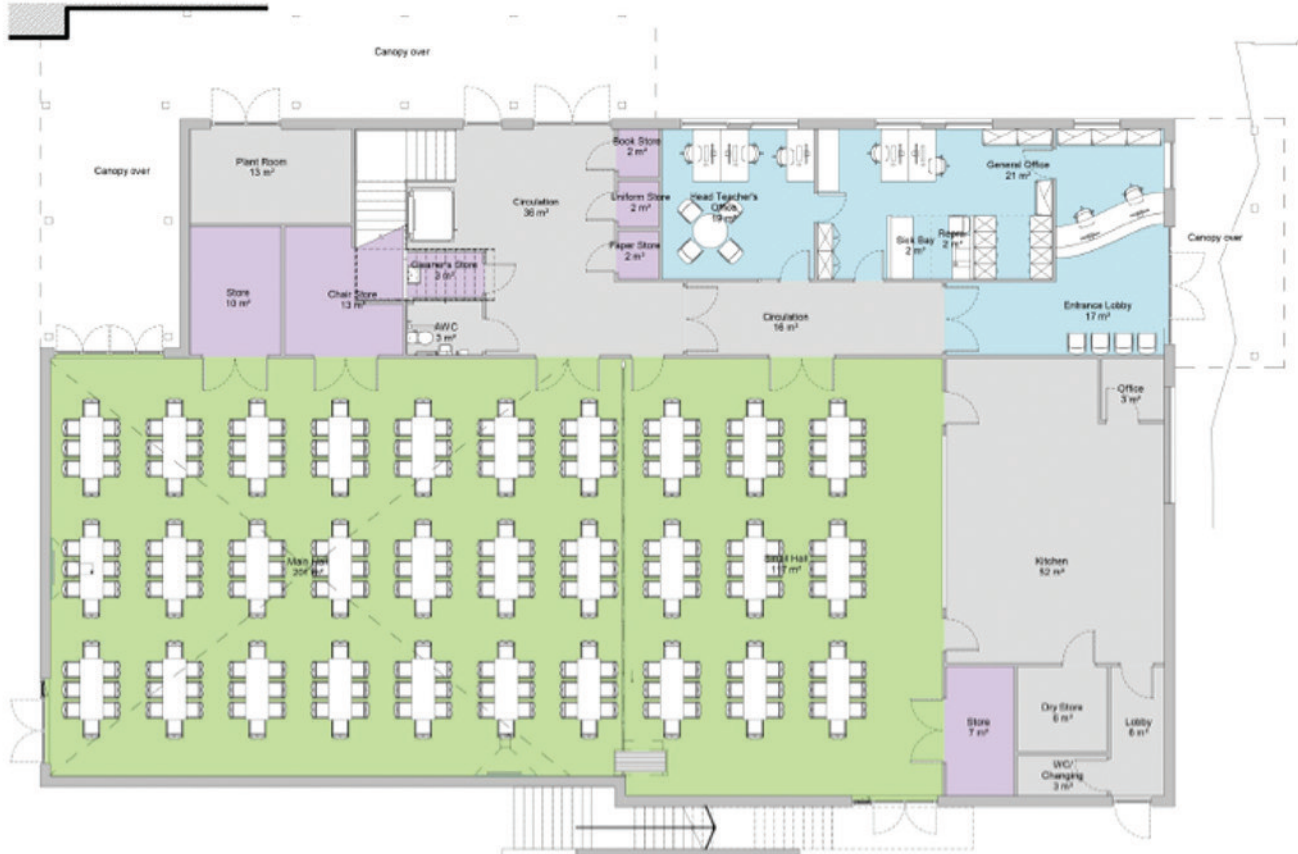


North West Elevation

PROPOSALS: SITE LAYOUT



PROPOSALS: GROUND FLOOR



PROPOSALS: FIRST FLOOR



PARENT SUPPORT ADVISOR/DROP-IN

Coffee Mornings

Thursday 25th January

Thursday 8th February

Triple P Team Anne-Marie in attendance

Thursday 22nd February

Thursday 8th March

Triple P Team Anne-Marie in attendance

Thursday 22nd March

Every other
Thursday in the
SANCTUARY
from
9-10am

To meet with Family Support Advisor Amanda Nippard and Ann Marie Cox, Triple P Parenting Team to discuss any particular challenges you may have with your child: bedtimes, routines, refusing homework, challenging behavior/or are you struggling personally and need some advice or signposting.

Want to
chat to
other
parents?

All
parents
are
welcome

Worried
about your
child?
1-1 sessions are
available

Diary Date

**Monday 19th
February
INSET DAY**

Archive



You can read all the previous newsletters on our website.

Twitter

Be the first to
hear the news.
Follow us on Twitter.
We now have **821**
followers!



Polegate School
Oakleaf Drive
Polegate
East Sussex BN26 6PT
Tel: 01323 482404
Email: info@polegateschool.co.uk



Feedback

We'd love to hear your feedback and any new ideas you have. Please send us your thoughts via the contact us page on the school website:

www.polegateschool.co.uk